



⊕ Swiss made heating cables



Accessories



HTS Global AG  
Gubelstrasse 12 • CH-6300 Zug • Switzerland • Phone: (+41) 41 560 3605  
Fax: (+41) 41 560 3601 • Mail: [info@hts-global.com](mailto:info@hts-global.com)

[www.hts-global.com](http://www.hts-global.com)

# ThermControl

EX-CAPILLARY-THERMOSTAT



## ThermControl-A ThermControl-B ThermControl-C

The capillary thermostat ThermControl is approved for use in hazardous areas Zones 1 and 2 for gas and Zones 21 and 22 for dust as a surface thermostat on pipes and vessels. There are different temperature ranges possible. The material of the capillary tube is stainless steel and the rugged enclosure is made of aluminium.

### Properties

- Robust
- Versatile use

### Applications

- Industrial applications
- Use in hazardous areas
- Heat tracing on pipes, valves and vessels
- Oil & gas industry



# ThermControl

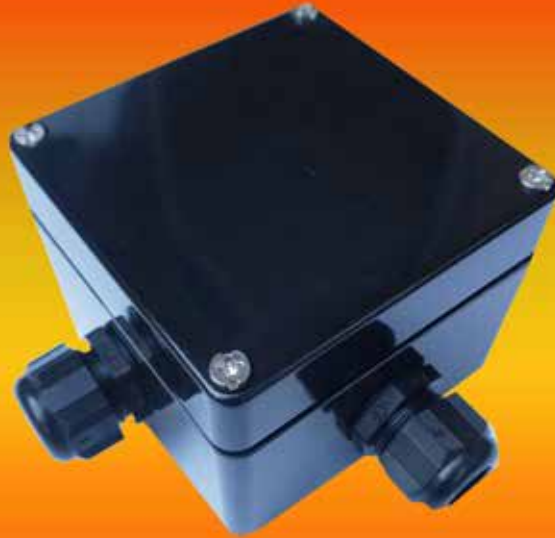
Name	Temperature Range (°C)
ThermControl-A	-50°C to +30°C
ThermControl-B	0°C to +50°C
ThermControl-C	0°C to 200°C

## Technical data

Ex-Classification:	II 2G Ex d IIB T6 Gb II 2D Ex tb IIIC T85°C Db
Ambient temperature:	-32 °C up to +50 °C
IP rating:	IP66
Switching capacity:	16A at 230V
Switching differential:	1 pol.
Switching contact:	1 pol.
Capillary tube:	Stainless steel
Enclosure:	120mm x 120mm x 110 mm
Bending radius capillary tube:	5mm
Cable entrance:	1 x gland M20, clamping range 10-14mm 1 x thread M 20 x 1.5
Salt-water proof:	Yes

# JunctionBox EX-1

For use in hazardous areas



In accordance with the Ex-Guidelines, the JunctionBox Ex-1, in its conventional design, is suitable for use in potentially explosive atmospheres. It covers a significantly wide range of ambient temperatures and may be mounted on walls or pipes.

## Properties

- Covers a wide range of temperatures
- Suited for wall-mounting and mounting on pipes

## Applications

- Hazardous areas
- Chemical and petrochemical industries
- Power stations
- Industrial plants with a need for frost protection or temperature maintenance



# JunctionBox EX-1

## Technical data

Ex-Classification:	II 2G Ex e IIC T5 Gb II 2D Ex tb IIIC T90°C Db
Ambient temperature:	-35 °C up to +55 °C
Nominal current:	max. 16 A
Nominal voltage:	max. 275 V
Terminals:	Min. 0,5 mm <sup>2</sup> , max. 6 mm <sup>2</sup>
Enclosure:	Polyester
Dimensions:	120 x 120 x 91 mm
Cable glands:	Polyamide
Type of mounting:	Walls and pipes

# JunctionBox EX-2

For use in hazardous areas



In accordance with the Ex-Guidelines, the JunctionBox Ex-2, in its conventional design, is suitable for use in potentially explosive atmospheres. It covers a significantly wide range of ambient temperatures and may be mounted on walls or pipes.

## Properties

- Covers a wide range of temperatures
- Suited for wall-mounting and mounting on pipes

## Applications

- Hazardous areas
- Chemical and petrochemical industries
- Power stations
- Industrial plants with a need for frost protection or temperature maintenance



# JunctionBox EX-2

## Technical data

Ex-Classification:	II 2G Ex ebIIIC T5 Gb II 2D Ex tb IIIC T90° Db
Ambient temperature:	-35 °C up to +55 °C
Nominal current:	max. 16 A
Nominal voltage:	max. 275 V
Terminals:	Min. 0,5 mm <sup>2</sup> , max. 6 mm <sup>2</sup>
Enclosure:	Polyester
Dimensions:	120 x 220 x 91 mm
Cable glands:	Polyamide
Type of mounting:	Walls and pipes



# ThermConnect-EX

Connection Kit  
for Self-Regulating Heating Tapes



The ThermConnect-Ex connection kit has been developed to enable the self-regulating heating cables in hazardous areas. This kit is compatible with:

**ThermTrace® Light**  
**ThermTrace® Regular**  
**ThermTrace® Super**  
**ThermTrace® X**

## Certificate

IBExU15ATEX1014X

## Properties

- Easy termination
- Time-saving

## Applications

- Pipe heating
- Frost protection for industrial plants
- Hazardous areas
- Chemical and petrochemical plants
- Oil and gas industry
- Containers and tanks
- Food industry





# ThermConnect-TTC

Connection Kit and End-Termination  
for Constant Wattage Heating Tapes



The ThermConnect-TTC connection kits have specifically been developed for the ThermTrace Constant and ThermTrace Constant Mini series of constant wattage heating tapes. The kits come with an end-termination and may be used in non-hazardous areas.

## Properties

- Easy connection
- Including end-termination
- Time-saving

## Applications

- Pipe heating
- Frost protection for industrial plants
- Chemical and petrochemical plants
- Containers and tanks
- Food industry





# ThermConnect End-TTL

End Termination Kit  
for Self-regulating Heating Cables



ThermConnect End-TTL kits are compatible with ThermTrace Lite self-regulating heating cables and have especially been developed for use in hazardous areas.

For our different types of ATEX certified self-regulating heating cables, we offer several custom-fit end-termination kits.

Compatible with:  
**ThermTrace<sup>®</sup>Light**

Permissible ambient temperature:  
-45°C up to 85°C

## Properties

- Easy termination
- Time-saving

## Applications

- Pipe heating
- Frost protection for industrial plants
- Hazardous areas
- Chemical and petrochemical plants
- Oil and gas industry
- Containers and tanks
- Food industry





# ThermConnect End-TTR

End Termination Kit  
for Self-regulating Heating Cables



The ThermConnect End-TTR kits are compatible with ThermTrace Regular self-regulating heating cables and have specifically been developed for usage in hazardous areas.

For our different types of ATEX certified self-regulating heating cables, we offer several custom-fit end-termination kits.

Compatible with:

**ThermTrace® Regular**

Permissible ambient temperature:  
-45°C up to 85°C

## Properties

- Easy termination
- Time-saving

## Applications

- Pipe heating
- Frost protection for industrial plants
- Hazardous areas
- Chemical and petrochemical plants
- Oil and gas industry
- Containers and tanks
- Food industry







# ThermConnect End-TTS

End Termination Kit  
for Self-regulating Heating Cables



The ThermConnect End-TTS kits have especially been developed for use in hazardous areas at high temperatures; they are compatible with ThermTrace Super self-regulating heating cables.

For our different types of ATEX certified self-regulating heating cables, we offer several custom-fit end-termination kits.

Compatible with:

**ThermTrace® Super**

Permissible ambient temperature:  
-40°C up to 210°C

## Properties

- Easy termination
- Time-saving

## Applications

- Pipe heating
- Frost protection for industrial plants
- Hazardous areas
- Chemical and petrochemical plants
- Oil and gas industry
- Containers and tanks
- Food industry





# ThermConnect End-TTX

End Termination Kit  
for Self-regulating Heating Cables



The ThermConnect End-TTX kits have especially been developed for use in hazardous areas at high temperatures; they are compatible with ThermTrace X self-regulating heating cables.

For our different types of ATEX certified self-regulating heating cables, we offer several custom-fit end-termination kits.

Compatible with:  
**ThermTrace® X**

Permissible ambient temperature:  
-60°C up to 250°C

## Properties

- Easy termination
- Time-saving

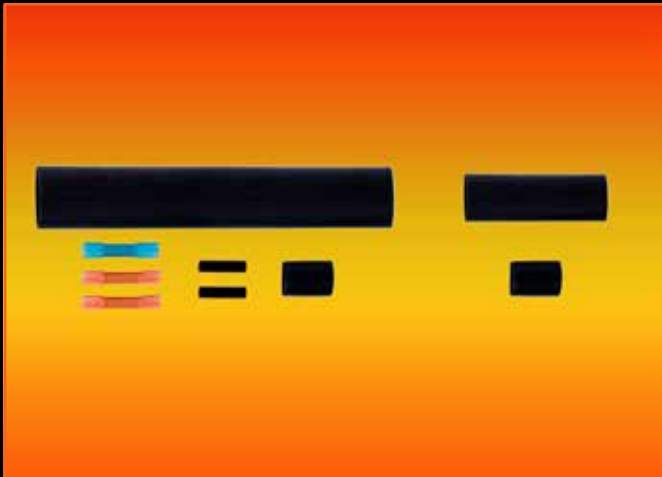
## Applications

- Pipe heating
- Frost protection for industrial plants
- Hazardous areas
- Chemical and petrochemical plants
- Oil and gas industry
- Containers and tanks
- Food industry





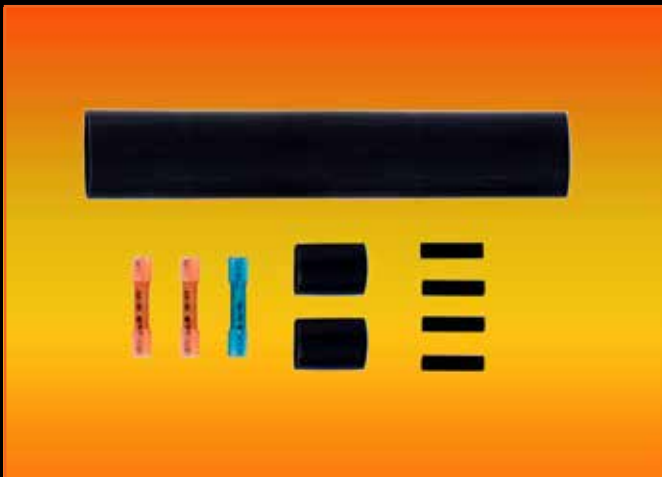
# HTS Accessories



## ThermConnect-A

Heat-shrink power connection and end-termination kit for all HTS self-regulating heating tapes for non-hazardous areas.

The end-termination also using shrink sleeves.



## ThermConnect-B

Heat-shrink connection kit for direct connection of two heating tapes for non-hazardous areas. The kit is suitable for all HTS self-regulating heating tapes.



## WarningLabel

Warning Label for all HTS heating tapes English "Electric Heat Tracing"



